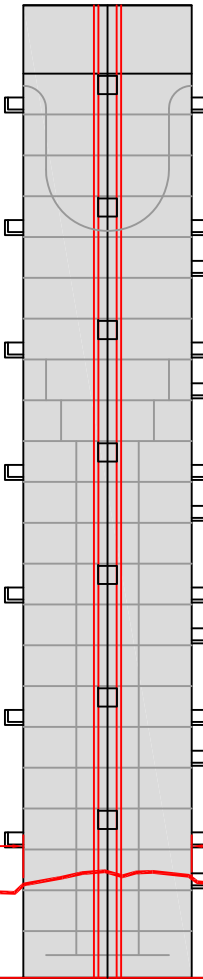
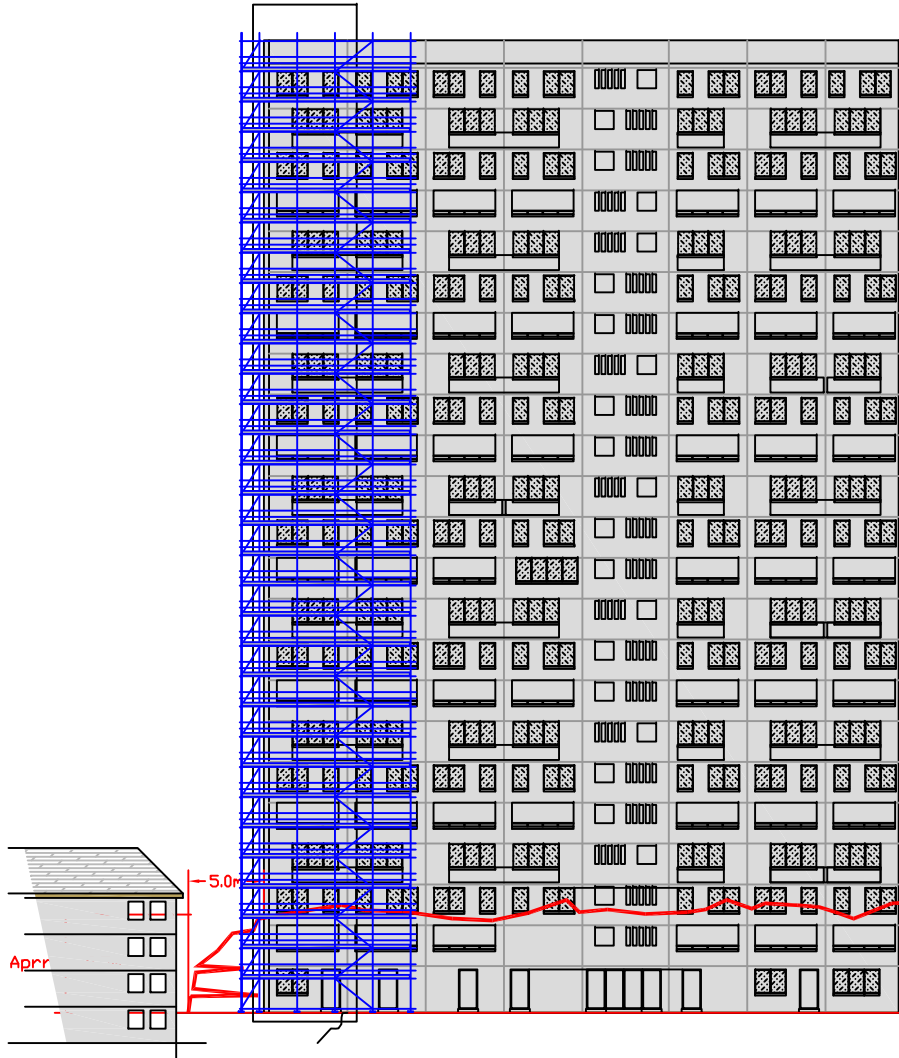
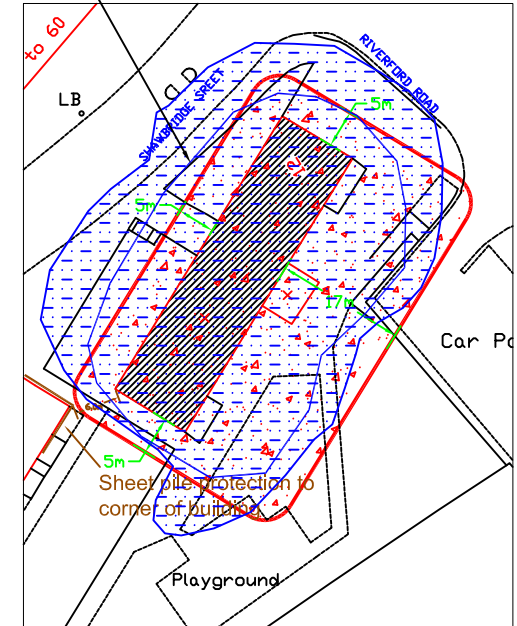


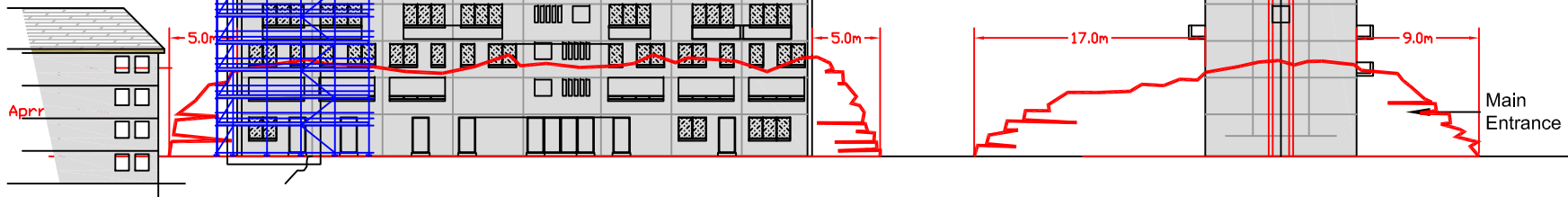
THIS DRAWING IS COMMERCIALY CONFIDENTIAL AND COPYRIGHT REMAINS WITH COLEMAN & COMPANY LIMITED. THE DRAWING MAY NOT BE REPRODUCED OR USED BY OUTSIDE PARTIES WITHOUT PRIOR WRITTEN CONSENT OF COLEMAN & COMPANY LIMITED.



Main Volume of debris



Debris spread plan



B	22.07.08	Post Demo Debris spread added	EWA	B
A	14.05.08	Debris Pile Dims corrected	EWA	A
REV:	DATE:	DESCRIPTION:	DRAWN:	CHK'D:

Glasgow Housing Association  
Debris spread to 12 Riverford St  
Pollokshaws, Glasgow.

DATE: 23.07.08		SCALE: 1:500 @A4	
SHEET: 1	DRAWN: EWA	CHK'D:	APPR:
DRAWING NUMBER: C177.1 - 005.B			

**COLEMAN & COMPANY**  
DEMOLITION | LAND RECLAMATION | BULK EXCAVATION

Shady Lane, Great Barr, Birmingham, B44 9ER.  
Tel: +44(0)121-325-2424 Fax: +44(0)121-325-2425  
www.coleman-co.com contracts@coleman-co.com